

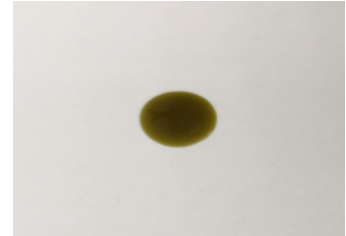
# CERTIFICATE OF ANALYSIS No.: 2020-2153

## CLIENT

Pharmahemp d.o.o. , Cesta v Gorice 8  
1000 Ljubljana, Slovenija

## SAMPLE

CBD DROPS 10% - olive oil



Sample condition: SUITABLE  
Sample ID: 204436  
Sample type: Viscous liquid  
Batch No.: DR10020301F

Work order: 2020-88365  
Analysis ID: 2020\_255  
Method ID: PHL\_RPC\_10C  
Method SOP: MET-002

Sample received: 27/10/2020  
Start of analysis: 27/10/2020  
End of analysis: 28/10/2020  
Analyst: Janez Gerdenc

## CANNABINOID PROFILE

	Concentration [% w/w]	Expanded uncertainty [% w/w]	Graphic presentation of relative cannabinoid concentration
<b>CBDV</b> - Cannabidivarin	1.177	0.059	
<b>CBDA</b> - Cannabidiolic acid	1.448	0.072	
<b>CBGA</b> - Cannabigerolic acid	0.055	0.016	
<b>CBG</b> - Cannabigerol	0.374	0.093	
<b>CBD</b> - Cannabidiol	8.62	0.43	
<b>THCV</b> - Tetrahydrocannabivarin	0.695	0.083	
<b>CBN</b> - Cannabinol	< LOQ	n/a	
<b>CBC</b> - Cannabichromene	0.0415	0.0091	
<b>THC</b> - Δ-9-Tetrahydrocannabinol	0.091	0.020	
<b>THCA</b> - Δ-9-Tetrahydrocannabinolic acid	0.0402	0.0088	

Units and abbreviations: % w/w = weight percent, < LOQ = below the limit of quantitation (0.03 % w/w), ND = not detected, n/a = not available.

The results given herein apply only to the sample as received. **Expanded Uncertainty** was calculated using coverage factor  $k = 2$ , corresponding to a double standard uncertainty and characterizes the interval value in which it is possible to expect the real value with a probability of 95%. This is stated according to the ISO/IEC Guide 98-3.

Total or partial reproduction of this document is not allowed without the permit of PharmaHemp d.o.o. The document does not substitute any other legal document.

Date issued:

28/10/2020

Approved by:

mag. Marko Dragan  
Analytical Laboratory Manager

Authorized by:

dr. Boštjan Jančar  
Chief Technology Officer

End of Certificate